

55 Tonne Crawler Crane

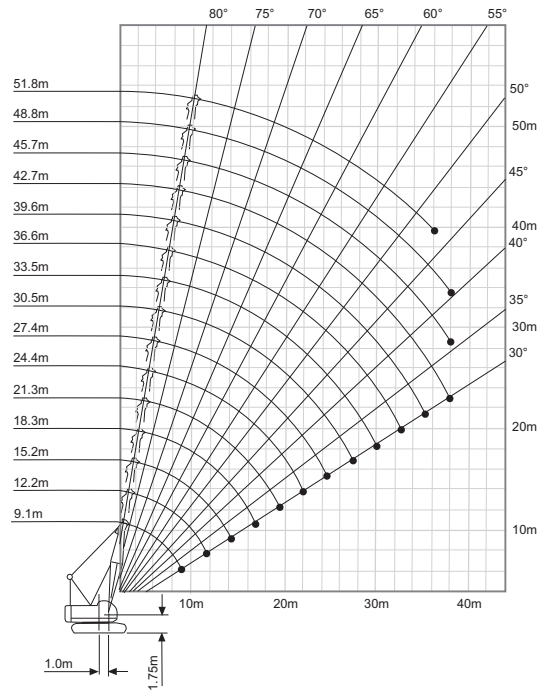
Lift Capacity: 55.0 Tonne
Boom Length: 45.7 m
Fly Jib Length: 18.3 m

Main Hook Weight: 400 Kg
Aux Hook Weight: 160 Kg
Line Pull: 6.6 Tonne

55 Tonne Crawler Rating Chart

M	9.1	12.1	15.2	18.2	21.3	24.3	27.4	30.4	33.5	36.5	39.6	42.6	45.7
3.0	55.0	55.0											
3.7	55.0	55.0											
4.0	50.7	50.7	50.7										
4.5	44.5	44.4	44.4	44.3									
5.0	38.5	38.4	38.3	38.3	37.7								
5.5	32.7	32.6	32.6	32.6	32.5	31.6							
6.0	28.7	28.6	28.5	28.5	28.4	27.6	24.2						
7.0	22.8	22.7	22.6	22.6	22.5	22.4	22.4	22.3	21.3	19.2			
8.0	18.9	18.8	18.6	18.6	18.5	18.5	18.4	18.4	18.3	18.2	17.4	15.8	
9.0	16.1	15.0	15.8	15.8	15.7	15.6	15.6	15.5	15.4	15.4	15.3	15.2	13.2
10.0	15.9	13.8	13.7	13.6	13.5	13.5	13.4	13.4	13.3	13.2	13.1	13.1	13.0
12.0		11.2	10.7	10.7	10.6	10.5	10.4	10.4	10.3	10.2	10.1	10.0	10.0
14.0			8.8	8.7	8.6	8.5	8.4	8.4	8.3	8.2	8.1	8.0	8.0
16.0				8.5	7.3	7.2	7.1	7.0	6.9	6.8	6.7	6.6	6.5
18.0					6.8	6.2	6.1	6.0	5.9	5.8	5.7	5.6	5.5
20.0						5.4	5.3	5.2	5.1	5.0	4.9	4.8	4.7
22.0							4.6	4.5	4.4	4.3	4.2	4.1	4.0
24.0								4.5	4.0	3.9	3.8	3.7	3.6
26.0									3.8	3.4	3.3	3.2	3.1
28.0										3.1	3.0	2.9	2.8
30.0											2.60	2.5	2.4
32.0												2.5	2.3
34.0													2.2
36.0													2.1
38.0													2.0
													1.70
													1.5
													1.4
													1.30
													1.2

55 Tonne Crawler Working Range



55 Tonne Crawler Dimensions

