

# 80 Tonne All Terrain Crane

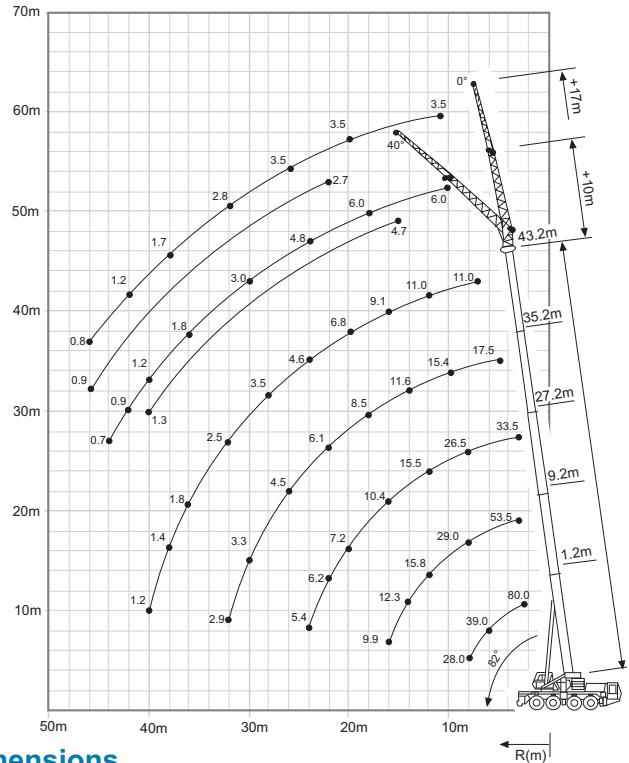
**Lift Capacity:** 80.0 Tonne  
**Boom Length:** 43.2 m  
**Fly Jib Length:** 10.0 m - 17.0 m

**Main Hook Weight:** 450 Kg  
**Aux Hook Weight:** 200 Kg  
**Line Pull:** 5.1 Tonne

**80 Tonne Rating Chart**

m	11.2	15.2	19.2	23.2	27.2	31.2	35.2	39.2	43.2
2.5	80								
3.0	68.0	56.5	53.5	50.5	33.5				
4.0	52.0	49.0	46.0	44.0	33.5	24.5			
5.0	45.0	43.5	41.0	38.5	33.5	24.5	17.5		
6.0	39.0	38.5	37.0	34.5	33.5	23.5	17.5	14.0	
7.0	33.5	34.0	33.5	31.0	30.5	22.0	17.5	14.0	11.0
8.0	27.5	28.5	28.0	27.0	25.5	20.5	17.5	14.0	11.0
9.0		23.5	24.0	23.5	22.0	19.0	16.5	14.0	11.0
10.0		20.0	20.5	20.5	19.2	17.8	15.4	13.7	11.0
11.0		17.1	17.6	17.5	17.0	16.8	14.4	12.9	11.0
12.0		14.8	15.3	15.2	14.9	15.1	13.4	12.2	11.0
13.0			13.4	13.4	13.8	13.6	12.3	11.6	10.6
14.0			11.9	11.9	12.4	12.1	11.6	11.0	10.1
15.0			10.7	11.0	11.1	10.8	11.0	10.0	9.5
16.0			9.6	10.1	10.0	9.7	9.9	9.3	9.1
18.0				8.4	8.3	8.4	8.1	8.1	7.8
20.0				7.0	7.0	7.1	6.9	6.8	6.5
22.0					6.0	6.0	5.8	5.7	5.4
24.0					5.1	5.1	5.0	4.9	4.6
26.0						4.4	4.2	4.1	3.8
28.0						3.8	3.7	3.5	3.3
30.0							3.1	3.0	2.7
32.0							2.7	2.6	2.3
34.0								2.2	1.9
36.0								1.9	1.6
38.0									1.3
40.0									1.0

**80 Tonne Working Range**



**80 Tonne Dimensions**

