

100* Tonne All Terrain Crane

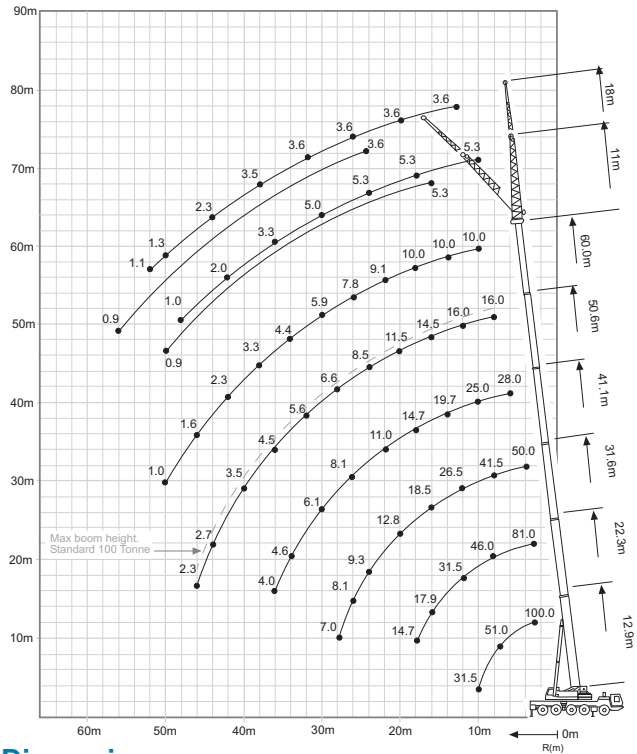
Lift Capacity: 100.0 Tonne
Boom Length: 60.0 m
Fly Jib Length: 11.0 m - 18.0 m

Main Hook Weight: 675 Kg
Aux Hook Weight: 200 Kg
Line Pull: 7.1 Tonne

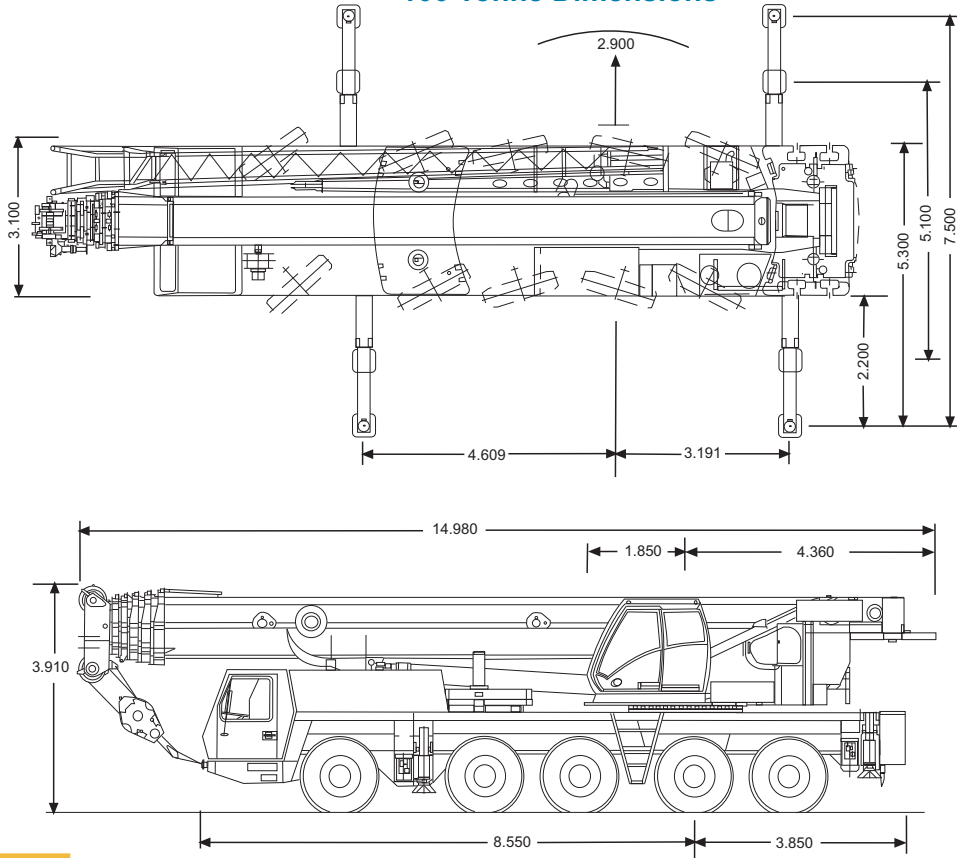
100 Tonne Rating Chart

m	12.9	17.6	22.3	27.0	31.6	36.3	41.1	45.8	50.6	55.3	60.0
2.5	100.0										
3.0	92.5	86.0	81.0	65.0							
4.0	78.0	76.5	71.0	65.0	50.0						
5.0	67.0	66.0	63.5	60.5	49.5	38.0					
6.0	58.0	58.5	57.5	54.5	47.0	37.0	28.0	20.5			
7.0	51.0	51.5	51.5	50.0	44.0	35.0	28.0	20.5	16.0		
8.0	45.5	46.0	45.5	45.0	41.5	33.0	28.0	20.5	16.0	11.6	
9.0	40.5	41.0	41.0	39.0	38.5	31.5	26.5	20.5	16.0	11.6	10.0
10.0	31.5	37.0	36.5	34.0	33.5	29.5	25.0	20.5	16.0	11.6	10.0
11.0		32.0	31.5	31.5	29.5	28.0	23.5	20.5	16.0	11.6	10.0
12.0		28.0	27.5	28.0	26.5	26.5	22.5	19.5	16.0	11.6	10.0
13.0		24.5	24.0	25.0	23.5	23.5	21.0	18.6	16.0	11.6	10.0
14.0		21.5	22.0	22.0	22.0	21.5	19.7	17.7	15.8	11.6	10.0
15.0		19.9	19.6	20.5	19.6	18.3	16.8	15.2	12.6	10.0	10.0
16.0		17.9	17.6	18.5	17.9	16.8	15.9	14.5	11.6	10.0	10.0
18.0		14.7	14.4	15.3	14.7	14.7	13.7	13.0	11.6	10.0	10.0
20.0			12.0	12.8	12.2	12.9	11.6	11.5	11.1	9.7	
22.0			10.1	10.9	11.3	11.0	9.9	9.9	10.0	9.1	
24.0			7.4	9.3	9.9	9.4	9.2	8.5	8.7	8.6	
26.0				8.1	8.6	8.1	8.4	7.3	7.7	7.8	
28.0				7.0	7.5	7.0	7.3	6.6	7.0	6.8	
30.0					6.6	6.1	6.4	5.9	6.3	5.9	
32.0					5.8	5.3	5.6	5.6	5.5	5.1	
34.0						4.6	4.9	5.1	4.8	4.4	
36.0						4.0	4.4	4.5	4.2	3.8	
38.0							4.1	4.0	3.7	3.3	
40.0							3.8	3.5	3.2	2.8	
42.0							3.4	3.1	2.8	2.3	
44.0								2.7	2.4	2.0	
46.0								2.3	2.0	1.6	
48.0									1.7	1.3	
50.0									1.4	1.0	
52.0											
54.0											
56.0											

100 Tonne Working Range



100 Tonne Dimensions



*130 setup as 100