

150* Tonne All Terrain Crane

Lift Capacity: 150.0 Tonne
Boom Length: 64.0 m
Fly Jib Length: 11.0 m - 18.0 m

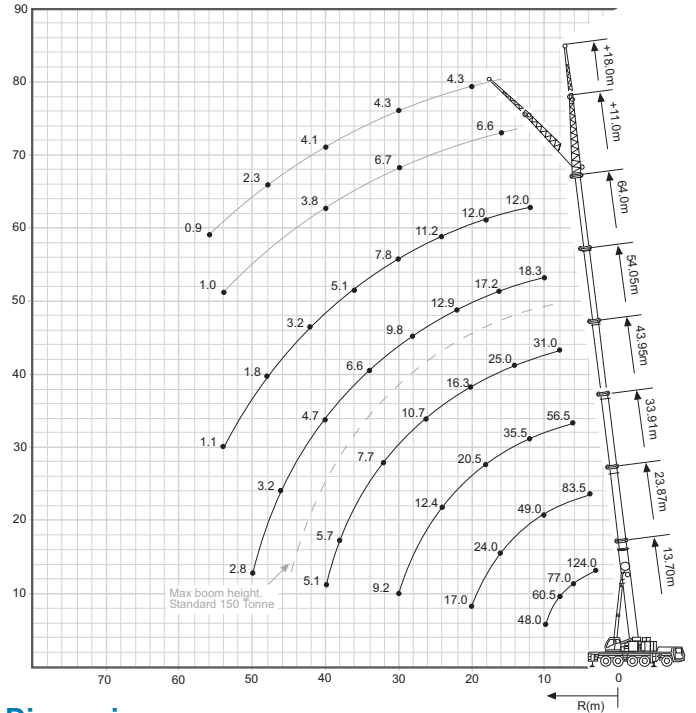
Main Hook Weight: 950 Kg
Aux Hook Weight: 300 Kg
Line Pull: 9.1 Tonne

150 Tonne Rating Chart

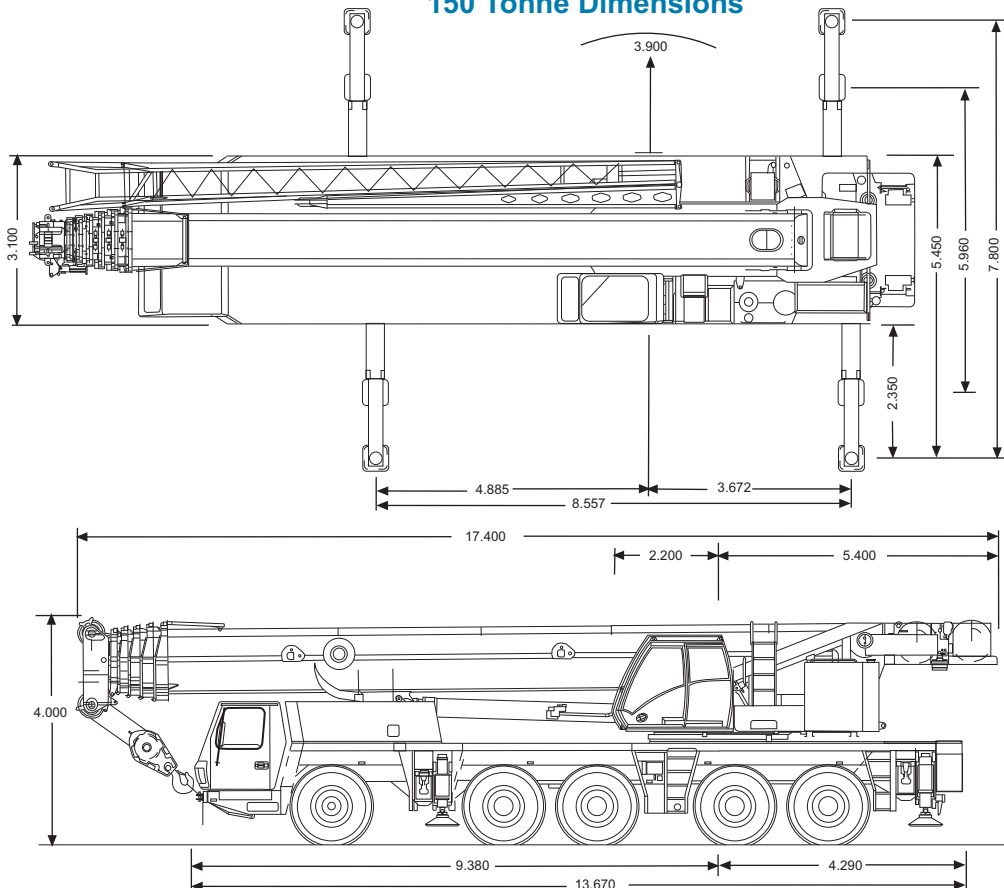
m	13.7	18.8	23.9	28.9	33.9	38.9	44.0	49.0	54.1	59.1	64.0
3.0	124.0	102.0	85.0								
4.0	104.0	95.5	83.5	75.0							
5.0	88.5	88.5	78.0	70.5	57.0						
6.0	77.0	77.5	74.0	66.5	57.0	44.5					
7.0	67.5	68.5	67.0	63.0	56.5	43.5	31.0				
8.0	60.5	61.0	59.5	60.0	53.0	42.5	31.0	24.0			
9.0	54.0	55.0	54.5	54.0	50.5	40.5	31.0	23.5	18.3		
10.0	48.0	49.0	49.0	46.5	45.5	38.5	31.0	23.5	18.3	14.6	
11.0		43.5	43.0	40.5	40.0	37.0	30.5	23.5	18.2	14.5	
12.0		38.0	38.0	36.5	35.5	35.0	28.5	23.0	18.2	14.5	12.0
13.0		34.0	33.5	34.0	31.5	31.5	27.0	22.5	17.9	14.5	12.0
14.0		30.0	30.5	30.0	29.5	28.5	25.0	22.0	17.7	14.5	12.0
15.0		26.5	27.0	26.5	28.0	26.0	23.5	21.0	17.4	14.5	12.0
16.0		24.0	24.0	24.0	25.0	23.5	22.0	20.5	17.2	14.5	12.0
18.0			19.7	21.0	20.5	19.7	18.5	17.9	16.2	14.0	12.0
20.0			17.0	17.6	17.1	16.3	16.6	15.2	15.1	13.4	12.0
22.0				15.0	14.5	14.3	14.5	13.0	12.9	12.8	11.7
24.0				12.9	12.4	13.2	12.4	11.6	11.4	11.3	11.2
26.0					10.7	11.5	10.7	10.8	10.6	10.2	10.1
28.0					10.1	10.0	9.3	9.7	9.8	9.2	8.8
30.0					9.2	8.8	8.2	8.4	8.6	8.3	7.8
32.0						7.7	7.7	7.5	7.5	7.3	6.8
34.0						6.9	7.2	7.0	6.6	6.4	5.9
36.0							6.4	6.3	6.0	5.6	5.1
38.0							5.7	5.6	5.3	4.9	4.4
40.0							5.1	5.0	4.7	4.3	3.7
42.0								4.4	4.1	3.7	3.2
44.0									4	3.6	3.2
46.0										3.2	2.7
48.0										2.8	2.3
50.0										2.4	2.0
52.0											1.6
54.0											1.3

33.0t Counterweight

150 Tonne Working Range



150 Tonne Dimensions



*170 setup as 150

