

# 170 Tonne All Terrain Crane

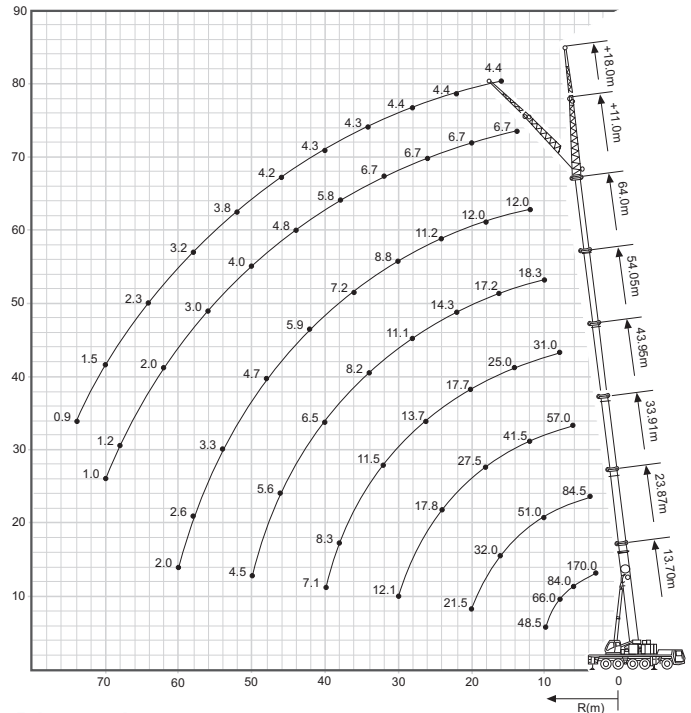
**Lift Capacity:** 170.0 Tonne  
**Boom Length:** 64.0 m  
**Fly Jib Length:** 11.0 m - 18.0 m

**Main Hook Weight:** 600 Kg  
**Aux Hook Weight:** 200 Kg  
**Line Pull:** 9.1 Tonne

**170 Tonne Rating Chart**

m	13.7	13.7	18.8	23.9	28.9	33.9	38.8	43.9	49.0	54.0	59.0	64.0
2.5	170.0											
3.0	125.0	125.0	102.0	85.0								
4.0	109.0	108.0	95.5	84.5	75.0							
5.0	95.0	92.5	91.5	78.0	70.5	57.0						
6.0	84.0	80.5	81.0	74.0	66.5	57.0	44.5					
7.0	74.5	71.0	71.5	70.0	63.0	56.5	43.5	31.0				
8.0	66.0	63.5	64.0	62.5	60.5	53.0	42.5	31.0	24.0			
9.0	58.0	57.0	57.5	56.0	57.0	50.5	40.5	31.0	23.5	18.3		
10.0	48.5	48.5	52.0	51.0	51.5	47.0	38.5	31.0	23.5	18.3	14.6	
11.0		47.5	46.5	47.0	44.5	37.0	30.5	23.5	18.2	14.5		
12.0		43.5	43.5	43.0	41.5	35.0	28.5	23.0	18.2	14.5	12.0	
13.0		40.0	40.0	39.5	39.5	33.5	27.0	22.5	17.9	14.5	12.0	
14.0		36.5	37.0	36.5	37.5	32.0	25.0	22.0	17.7	14.5	12.0	
15.0		31.0	34.5	34.0	34.5	30.5	23.5	21.0	17.4	14.5	12.0	
16.0			32.0	31.5	32.0	29.5	22.5	20.5	17.2	14.5	12.0	
18.0			27.0	26.5	27.5	26.5	20.0	18.4	16.2	14.0	12.0	
20.0			21.5	23.5	23.0	24.0	17.7	16.9	15.2	13.4	12.0	
22.0				20.5	19.7	20.5	16.2	15.4	14.3	12.8	11.7	
24.0				17.7	17.8	17.9	14.7	14.1	13.2	12.1	11.2	
26.0					16.4	15.6	13.7	12.8	12.1	11.4	10.5	
28.0					14.5	13.7	12.8	11.8	11.1	10.6	9.7	
30.0					12.1	12.1	12.1	10.8	10.2	9.9	8.8	
32.0						10.8	11.5	10.0	8.8	8.5	8.3	
34.0							9.9	10.3	9.0	8.2	7.9	7.7
36.0								9.2	7.9	7.5	7.3	7.2
38.0								8.3	7.3	7.0	6.8	6.8
40.0								7.1	6.9	6.5	6.3	6.3
42.0									6.6	6.1	5.9	5.9
44.0									6.4	5.9	5.4	5.5
46.0										5.6	4.9	5.1
48.0										5.3	4.6	4.7
50.0										4.5	4.3	4.2
52.0											4.1	3.7
54.0											3.8	3.3
56.0												2.9
58.0												2.6
60.0												2.0

**170 Tonne Working Range**



**170 Tonne Dimensions**

