

10 Tonne City Crane

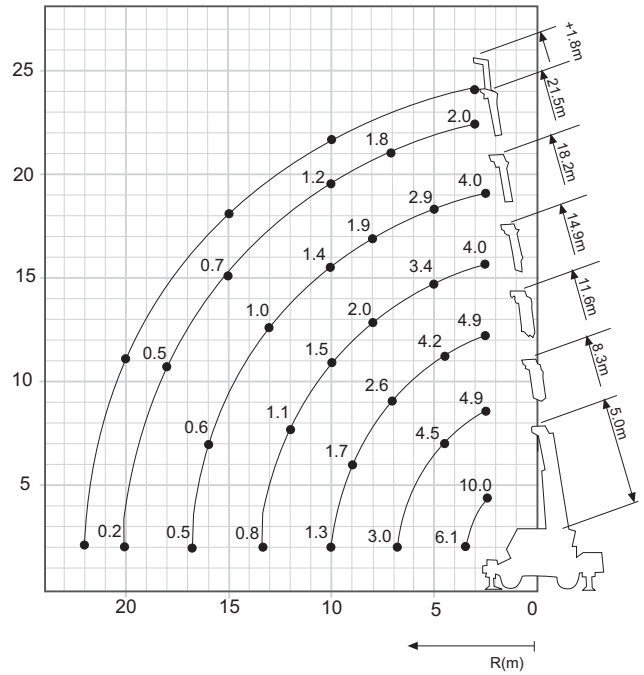
Lift Capacity: 10.0 Tonne
Boom Length: 21.5 m
Fly Jib Length: 1.8 m

Main Hook Weight: 75 Kg
Aux Hook Weight: 25 Kg
Line Pull: 1.4 Tonne
Spreader: 1.66m, 2.03m, 2.63m, 2.93m.

10 Tonne Rating Chart

M	5.0	8.3	11.6	14.9	18.2	21.5
1.5	10.00	4.90	4.90			
2.0	10.00	4.90	4.90	4.00		
2.5	10.00	4.90	4.90	4.00	4.00	
3.0	8.00	4.90	4.90	4.00	4.00	2.00
3.5	6.10	4.90	4.90	4.00	4.00	2.00
3.9		4.90	4.90	4.00	3.60	2.00
4.2		4.90	4.50	4.00	3.40	2.00
4.5		4.55	4.20	3.75	3.20	2.00
5.0		4.05	3.80	3.40	2.90	2.00
5.5		3.70	3.45	3.05	2.65	2.00
6.0		3.35	3.15	2.80	2.47	2.00
6.5		3.05	2.90	2.55	2.30	1.90
7.0			2.65	2.35	2.15	1.80
8.0			2.25	2.00	1.90	1.60
9.0			1.77	1.75	1.65	1.40
10.0			1.37	1.53	1.45	1.23
11.0				1.33	1.28	1.10
12.0				1.15	1.13	1.00
13.0				0.82	1.00	0.90
14.0					0.78	0.80
15.0					0.63	0.72
16.0					0.53	0.65
17.0						0.57
18.0						0.50
19.0						0.35
20.0						0.28

10 Tonne Working Range



10 Tonne Dimensions

