

# 30 Tonne Truck Crane

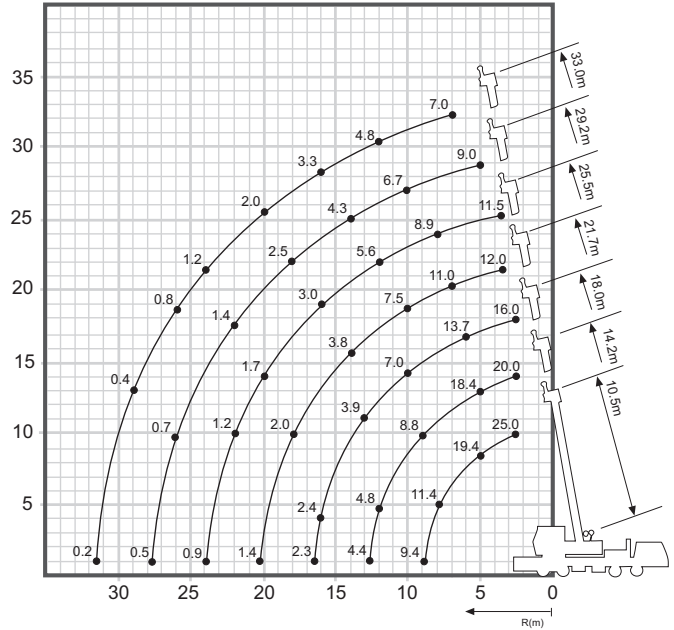
**Lift Capacity:** 25.0 Tonne  
**Boom Length:** 33.0 m

**Main Hook Weight:** 280 Kg  
**Aux Hook Weight:** 60 Kg  
**Line Pull:** 3.4 Tonne  
**Spreader:** 2.25m, 2.45m, 2.75m, 3.05m, 3.35m, 3.65m, 3.95m, 5.27m.

**30 Tonne Rating Chart**

M	10.5	14.2	18.0	21.7	25.5	29.2	33.0
2.5	25.00	20.00	16.00				
3.0	25.00	20.00	16.00				
3.5	25.00	20.00	16.00	12.00			
4.0	22.90	20.00	16.00	12.00	11.50		
4.5	21.00	20.00	16.00	12.00	11.50		
5.0	19.40	18.40	16.00	12.00	11.50	9.00	
6.0	16.20	15.30	13.73	12.00	11.50	9.00	
7.0	13.70	12.65	11.96	11.00	10.00	9.00	7.00
8.0	11.43	10.56	10.39	10.20	8.90	8.20	7.00
8.8	9.40	9.18	9.07	9.40	8.25	7.60	6.40
9.0		8.88	8.67	9.10	8.05	7.45	6.25
10.0		7.20	7.04	7.58	7.30	6.75	5.70
12.0		4.87	4.76	5.29	5.61	5.65	4.80
12.5		4.41	4.35	4.83	5.16	5.32	4.55
13.0			3.99	4.43	4.80	4.92	4.45
14.0			3.33	3.82	4.09	4.31	4.10
16.0			2.42	2.80	3.02	3.29	3.35
16.3			2.32	2.70	2.92	3.19	3.25
18.0				2.09	2.31	2.53	2.64
20.0				1.48	1.70	1.92	2.03
22.0					1.24	1.41	1.52
23.8					0.94	1.06	1.22
26.0						0.75	0.86
27.5						0.50	0.71
29.0							0.46
31.3							0.25

**30 Tonne Working Range**



**30 Tonne Dimensions**

