

50 Tonne Truck Crane

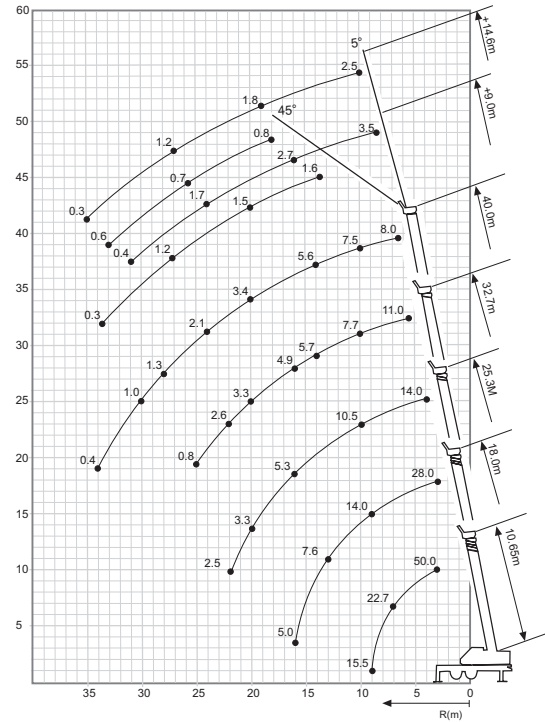
Lift Capacity: 50.0 Tonne
Boom Length: 40.0 m
Fly Jib Length: 9.0 m & 14.6 m

Main Hook Weight: 460 Kg
Aux Hook Weight: 100 Kg
Line Pull: 4.4 Tonne

50 Tonne Rating Chart

M	10.65	18.0	21.7	25.3	29.0	32.7	40.0
3.0	50.0	14.00	14.00				
3.5	43.00	14.00	14.00				
4.0	38.00	14.00	14.00	14.00			
4.5	34.00	14.00	14.00	14.00	14.00		
5.0	30.20	14.00	14.00	14.00	13.20		
5.5	27.50	14.00	14.00	14.00	12.50	11.00	
6.0	25.00	14.00	14.00	14.00	11.80	10.80	
6.5	22.70	14.00	14.00	14.00	11.20	10.40	8.00
7.0	20.70	14.00	14.00	13.40	10.70	9.90	8.00
7.5	18.90	14.00	14.00	12.80	10.20	9.50	8.00
8.0	17.30	14.00	14.00	12.30	9.70	9.10	8.00
8.5	15.50	14.00	14.00	11.80	9.20	8.70	8.00
9.0	13.90	14.00	14.00	11.30	8.80	8.30	8.00
10.0		12.20	12.40	10.50	8.00	7.70	7.50
11.0		10.25	10.40	9.80	7.30	7.10	6.95
12.0		8.80	8.95	9.05	6.80	6.50	6.45
13.0		7.60	7.75	7.85	6.30	6.10	6.00
14.0		6.60	6.75	6.85	5.80	5.70	5.60
16.0		5.05	5.20	5.30	5.10	4.90	4.85
18.0		4.10	4.20	4.20	4.25	4.25	4.25
20.0		3.20	3.30	3.30	3.30	3.40	3.40
22.0				2.50	2.60	2.60	2.75
24.0					2.00	2.10	2.15
26.0					1.55	1.60	1.70
28.0						1.15	1.30
30.0						0.80	1.00
32.0							0.70
34.0							0.40

50 Tonne Working Range



50 Tonne Dimensions

