

20 Tonne Rough Terrain Crane

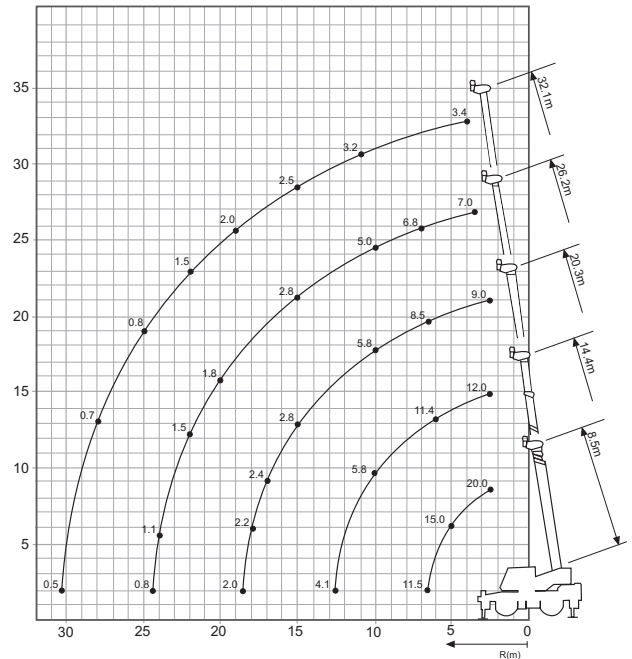
Lift Capacity: 20.0 Tonne
Boom Length: 32.1 m

Main Hook Weight: 220 Kg
Aux Hook Weight: 60 Kg
Line Pull: 3.3 Tonne
Spreader: 2.2m, 2.5m, 2.8m, 3.1m, 3.4m, 3.8m.

20 Tonne Rating Chart

M	8.5	14.4	20.3	26.2	32.1
2.5	20.0	12.0	9.0		
3.0	20.0	12.0	9.0		
3.5	20.0	12.0	9.0	7.0	
4.0	18.5	12.0	9.0	7.0	3.4
4.5	16.5	12.0	9.0	7.0	3.4
5.0	15.0	12.0	9.0	7.0	3.4
5.5	13.7	12.0	9.0	7.0	3.4
6.0	12.5	11.4	9.0	7.0	3.4
6.5	11.5	10.6	8.5	7.0	3.4
7.0		9.9	8.0	6.8	3.4
8.0		8.4	7.2	6.1	3.4
9.0		6.8	6.4	5.5	3.4
10.0		5.8	5.8	5.0	3.4
11.0		4.8	4.9	4.6	3.2
12.0		4.1	4.2	4.2	3.0
13.0			3.6	3.6	2.8
14.0			3.4	3.2	2.7
15.0			3.0	2.8	2.5
16.0			2.7	2.6	2.4
17.0			2.4	2.4	2.3
18.0			2.2	2.2	2.1
19.0				2.0	2.0
20.0				1.8	1.8
22.0				1.5	1.5
24.0				1.1	1.1
26.0					0.9
28.0					0.7
30.0					0.5

20 Tonne Working Range



20 Tonne Dimensions

